

\$775,000 - 1023 Carter Crest Road, Edmonton

MLS® #E4457382

\$775,000

4 Bedroom, 3.00 Bathroom, 1,949 sqft

Single Family on 0.00 Acres

Carter Crest, Edmonton, AB

EXECUTIVE BUNGALOW offering almost 2000SQFT on the main level, a fully finished basement and a sunny WEST yard! This custom built home features both an Open Concept Plan as well as 3 VERSATILE Separate room to be used as needed!! (Currently used as a Den, Formal Dining, and Bedroom). The main living area features soaring 10 foot ceilings, a primary RETREAT with huge walk-in closet and SPACIOUS ensuite, additional features include central air, central vac with garage hookup, and both a wood-burning fireplace with electric starter and an additional electric fireplace. The garage is finished with epoxy flooring, workbench, and storage, while the yard is your PRIVATE OUTDOOR OASIS is easy to enjoy TREX DECKING, electric awning, shed, sprinkler system, and multiple outdoor outlets. Ideal for those looking to simplify without compromise, this home is tucked in Carter Crest near trails, parks, shopping, and services - Fantastic access to everything Edmonton has to offer!

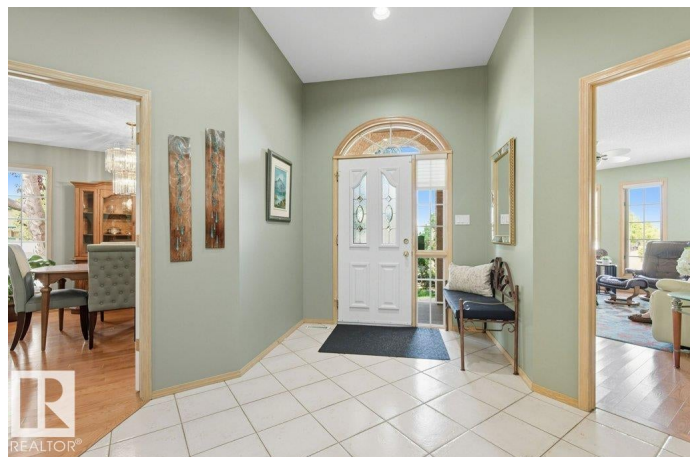
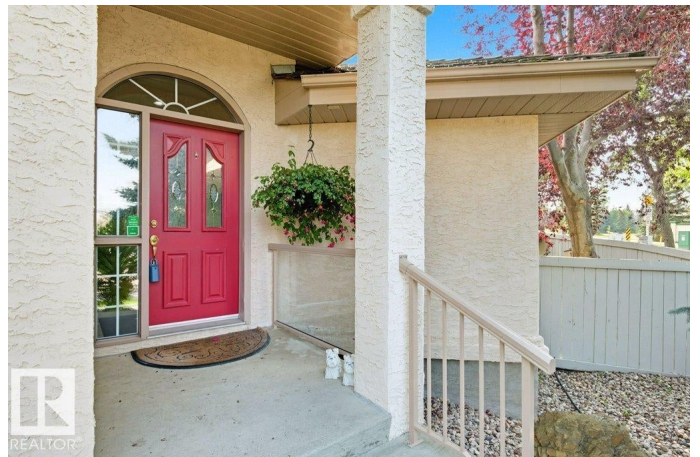
Built in 1992

Essential Information

MLS® # E4457382

Price \$775,000

Bedrooms 4



Bathrooms	3.00
Full Baths	3
Square Footage	1,949
Acres	0.00
Year Built	1992
Type	Single Family
Sub-Type	Detached Single Family
Style	Bungalow
Status	Active

Community Information

Address	1023 Carter Crest Road
Area	Edmonton
Subdivision	Carter Crest
City	Edmonton
County	ALBERTA
Province	AB
Postal Code	T6R 2K1

Amenities

Amenities	Deck
Parking	Double Garage Attached

Interior

Interior Features	ensuite bathroom
Appliances	Air Conditioning-Central, Dishwasher-Built-In, Dryer, Garburator, Microwave Hood Fan, Refrigerator, Storage Shed, Vacuum Systems, Washer, See Remarks, Stove-Induction
Heating	Forced Air-2, Natural Gas
Fireplace	Yes
Fireplaces	Wall Mount
Stories	2
Has Basement	Yes
Basement	Full, Finished

Exterior

Exterior	Wood, Stucco
Exterior Features	Corner Lot, Cul-De-Sac, Fenced, Landscaped, Playground Nearby, Public Transportation, Schools, Shopping Nearby

Lot Description	36' X 112'
Roof	Cedar Shakes
Construction	Wood, Stucco
Foundation	Concrete Perimeter

School Information

Elementary	GEORGE H LUCK
Middle	RIVERBEND
High	LILLIAN OSBORNE

Additional Information

Date Listed	September 11th, 2025
Days on Market	3
Zoning	Zone 14
HOA Fees	100
HOA Fees Freq.	Annually

DATA IS DEEMED RELIABLE BUT IS NOT GUARANTEED ACCURATE BY THE REALTORS® ASSOCIATION OF EDMONTON. COPYRIGHT 2025 BY THE REALTORS® ASSOCIATION OF EDMONTON. ALL RIGHTS RESERVED. Trademarks are owned or controlled by the Canadian Real Estate Association (CREA) and identify real estate professionals who are members of CREA (REALTOR®, REALTORS®) and/or the quality of services they provide (MLS®, Multiple Listing Service®)

Listing information last updated on September 14th, 2025 at 2:32pm MDT