

\$449,900 - 336 Bothwell Drive, Sherwood Park

MLS® #E4452834

\$449,900

4 Bedroom, 3.50 Bathroom, 1,403 sqft

Single Family on 0.00 Acres

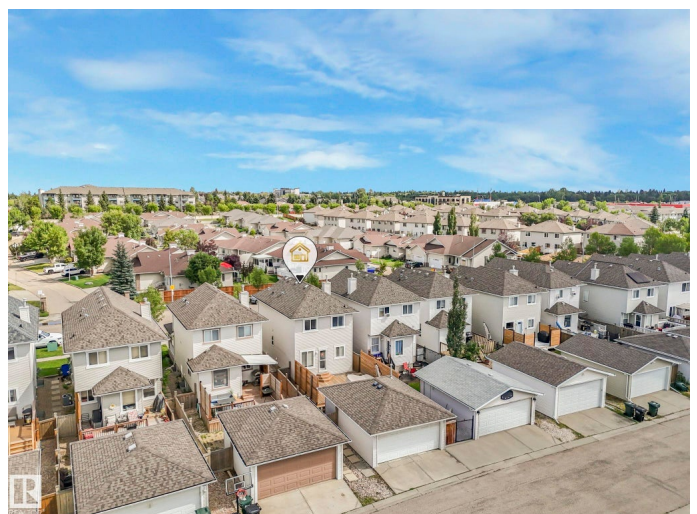
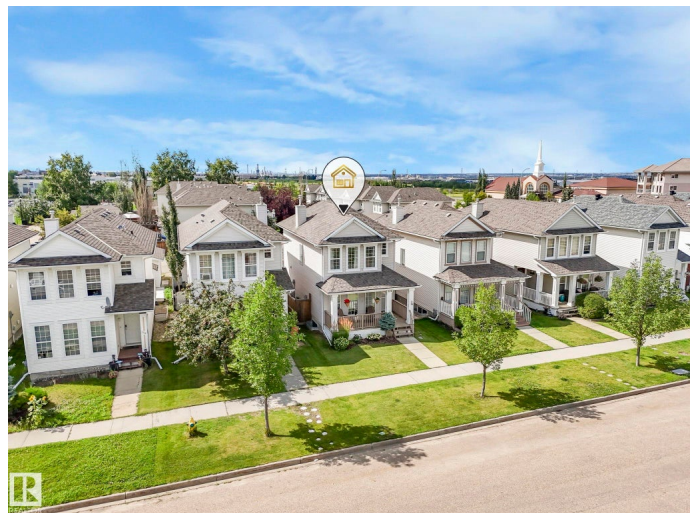
Strathcona Village, Sherwood Park, AB

Welcome to 336 Bothwell Drive in the heart of Sherwood Park! This charming 2-storey offers 4 bedrooms, 3.5 baths, and a heated double detached garage. The bright main floor features a spacious living room, functional kitchen, and dining area overlooking the backyard. Upstairs, the primary suite includes a private ensuite, with two additional bedrooms and a full bath. The finished basement adds a 4th bedroom, full bath, and versatile rec space. Enjoy a private, fully decked yard, perfect for relaxing or entertaining. Steps to schools, parks, and playgrounds, and minutes to Broadmoor Lake Park, Festival Place, Sherwood Park Mall, and trails. Experience the best of the Sherwood Park lifestyle â€” a welcoming community with small-town charm, modern amenities, and year-round activities.

Built in 2003

Essential Information

MLS® #	E4452834
Price	\$449,900
Bedrooms	4
Bathrooms	3.50
Full Baths	3
Half Baths	1
Square Footage	1,403
Acres	0.00



Year Built	2003
Type	Single Family
Sub-Type	Detached Single Family
Style	2 Storey
Status	Active

Community Information

Address	336 Bothwell Drive
Area	Sherwood Park
Subdivision	Strathcona Village
City	Sherwood Park
County	ALBERTA
Province	AB
Postal Code	T8H 2M7

Amenities

Amenities	On Street Parking, Air Conditioner, Deck, Detectors Smoke, Front Porch, No Animal Home, No Smoking Home, See Remarks, Natural Gas BBQ Hookup
Parking	Double Garage Detached

Interior

Interior Features	ensuite bathroom
Appliances	Air Conditioning-Central, Dishwasher-Built-In, Dryer, Garage Opener, Microwave Hood Fan, Refrigerator, Stove-Electric, Vacuum System Attachments, Washer, Window Coverings
Heating	Forced Air-1, Natural Gas
Fireplace	Yes
Fireplaces	Corner
Stories	3
Has Basement	Yes
Basement	Full, Finished

Exterior

Exterior	Wood, Vinyl
Exterior Features	Back Lane, Fenced, Golf Nearby, Shopping Nearby, See Remarks
Roof	Asphalt Shingles
Construction	Wood, Vinyl
Foundation	Concrete Perimeter

Additional Information

Date Listed August 14th, 2025
Zoning Zone 25

DATA IS DEEMED RELIABLE BUT IS NOT GUARANTEED ACCURATE BY THE REALTORS® ASSOCIATION OF EDMONTON. COPYRIGHT 2025 BY THE REALTORS® ASSOCIATION OF EDMONTON. ALL RIGHTS RESERVED.Trademarks are owned or controlled by the Canadian Real Estate Association (CREA) and identify real estate professionals who are members of CREA (REALTOR®, REALTORS®) and/or the quality of services they provide (MLS®, Multiple Listing Service®)
Listing information last updated on August 14th, 2025 at 3:17pm MDT