

\$259,900 - 410 273 Charlotte Way, Sherwood Park

MLS® #E4452818

\$259,900

2 Bedroom, 2.00 Bathroom, 849 sqft

Condo / Townhouse on 0.00 Acres

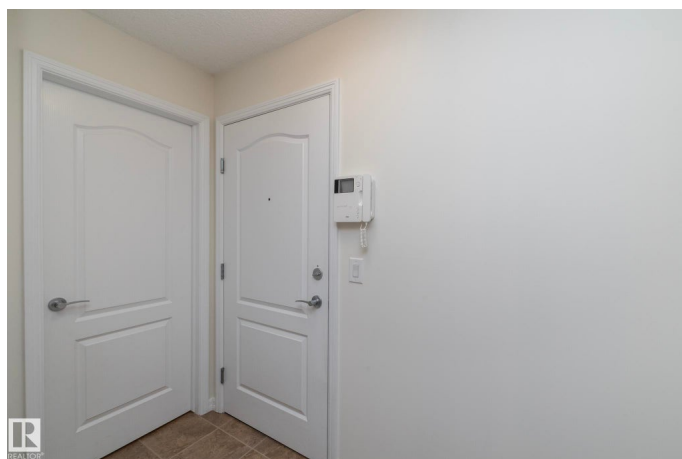
Lakeland Ridge, Sherwood Park, AB

Beautifully maintained 2 BEDROOM 2 BATHROOM top floor condo in Windsor Park (Lakeland Ridge). Enjoy your evenings and unobstructed views from your WEST-FACING PATIO—the perfect spot for an evening nightcap. Step inside to a bright, OPEN-CONCEPT LIVING AREA, where large windows fill the space with natural light. The kitchen features beautiful GRANITE COUNTER TOPS, RICH CHERRY OAK CABINETRY and spotless appliances. The PRIMARY BEDROOM features walk through closet and ENSUITE bathroom. Other features include large in-suite storage and access to exercise room & meeting room. Move-in ready!

Built in 2011

Essential Information

MLS® #	E4452818
Price	\$259,900
Bedrooms	2
Bathrooms	2.00
Full Baths	2
Square Footage	849
Acres	0.00
Year Built	2011
Type	Condo / Townhouse
Sub-Type	Lowrise Apartment



Style	Single Level Apartment
Status	Active

Community Information

Address	410 273 Charlotte Way
Area	Sherwood Park
Subdivision	Lakeland Ridge
City	Sherwood Park
County	ALBERTA
Province	AB
Postal Code	T8H 0N9

Amenities

Amenities	Detectors Smoke, Exercise Room, No Smoking Home, Parking-Visitor, Patio, Security Door, Sprinkler System-Fire, Storage-In-Suite
Parking	Stall

Interior

Interior Features	ensuite bathroom
Appliances	Dishwasher-Built-In, Dryer, Microwave Hood Fan, Refrigerator, Stove-Electric, Washer
Heating	Baseboard, Hot Water, Electric
# of Stories	4
Stories	1
Has Basement	Yes
Basement	None, No Basement

Exterior

Exterior	Wood, Stone, Vinyl
Exterior Features	Golf Nearby, Playground Nearby, Public Transportation, Schools, Shopping Nearby
Roof	Asphalt Shingles
Construction	Wood, Stone, Vinyl
Foundation	Concrete Perimeter

Additional Information

Date Listed	August 13th, 2025
Days on Market	1
Zoning	Zone 25
Condo Fee	\$432

DATA IS DEEMED RELIABLE BUT IS NOT GUARANTEED ACCURATE BY THE REALTORS® ASSOCIATION OF EDMONTON. COPYRIGHT 2025 BY THE REALTORS® ASSOCIATION OF EDMONTON. ALL RIGHTS RESERVED.Trademarks are owned or controlled by the Canadian Real Estate Association (CREA) and identify real estate professionals who are members of CREA (REALTOR®, REALTORS®) and/or the quality of services they provide (MLS®, Multiple Listing Service®)

Listing information last updated on August 14th, 2025 at 3:47pm MDT