

\$464,900 - 10 Lamoureux Place, St. Albert

MLS® #E4452805

\$464,900

4 Bedroom, 2.50 Bathroom, 1,165 sqft

Single Family on 0.00 Acres

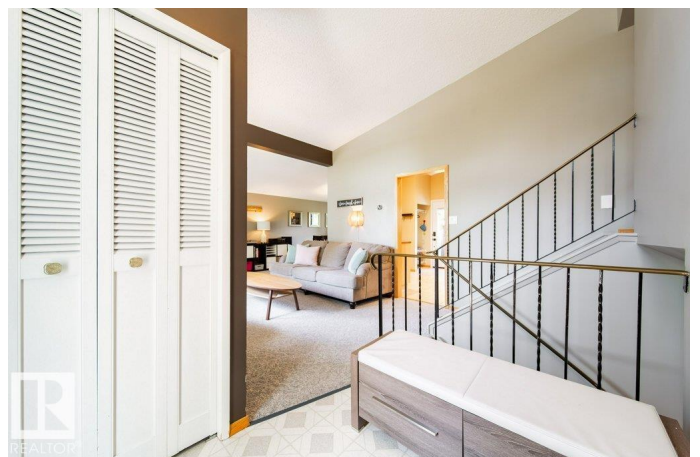
Lacombe Park, St. Albert, AB

Beautifully maintained 4-level split offering 2156 sqft of living space, situated at the end of a quiet cul-de-sac on a massive pie-shaped lot. Enjoy a db. Oversized garage & the convenience of being just steps from a park. Privacy here-the front yard is a showpiece with a charming bridge, flagstone patio, flowing creek, pergola, & mature trees. The backyard is impressive-fully fenced, beautifully landscaped, & exceptionally large, with a spacious deck, fire pit & fruit trees. Inside, the bright and open main floor boasts vaulted ceilings, large windows, a gas fireplace, AC & a welcoming layout that includes a living room, dining area, and sunny kitchen. Upstairs offers 3 generous bedrooms, 4-pce bath, & 2-piece ensuite. Just a steps down, youâ€™ll find a den/office, an additional bedroom, & a bathroom. The fully finished basement features a large rec room, & storage space. Recent updates include HWT, roof, soffits, fascia, eaves, windows, ext. doors, ext. paint, front deck, landscaping, & window coverings.

Built in 1974

Essential Information

MLS® #	E4452805
Price	\$464,900
Bedrooms	4



Bathrooms	2.50
Full Baths	2
Half Baths	1
Square Footage	1,165
Acres	0.00
Year Built	1974
Type	Single Family
Sub-Type	Detached Single Family
Style	4 Level Split
Status	Active

Community Information

Address	10 Lamoureux Place
Area	St. Albert
Subdivision	Lacombe Park
City	St. Albert
County	ALBERTA
Province	AB
Postal Code	T8N 2J4

Amenities

Amenities	Air Conditioner, Closet Organizers, Deck, Detectors Smoke, Front Porch, Vaulted Ceiling, Vinyl Windows
Parking Spaces	6
Parking	Double Garage Detached, Over Sized

Interior

Interior Features	ensuite bathroom
Appliances	Air Conditioning-Central, Dishwasher-Built-In, Dryer, Garage Control, Garage Opener, Microwave Hood Fan, Refrigerator, Stove-Gas, Washer, Window Coverings
Heating	Forced Air-1, Natural Gas
Fireplace	Yes
Fireplaces	Brick Facing, Direct Vent
Stories	4
Has Basement	Yes
Basement	Full, Finished

Exterior

Exterior	Wood, Stucco
Exterior Features	Cul-De-Sac, Fenced, Flat Site, Fruit Trees/Shrubs, Landscaped, Park/Reserve, Public Transportation, Schools, Shopping Nearby, See Remarks
Roof	Asphalt Shingles
Construction	Wood, Stucco
Foundation	Concrete Perimeter

Additional Information

Date Listed	August 13th, 2025
Days on Market	1
Zoning	Zone 24

DATA IS DEEMED RELIABLE BUT IS NOT GUARANTEED ACCURATE BY THE REALTORS® ASSOCIATION OF EDMONTON. COPYRIGHT 2025 BY THE REALTORS® ASSOCIATION OF EDMONTON. ALL RIGHTS RESERVED. Trademarks are owned or controlled by the Canadian Real Estate Association (CREA) and identify real estate professionals who are members of CREA (REALTOR®, REALTORS®) and/or the quality of services they provide (MLS®, Multiple Listing Service®)

Listing information last updated on August 14th, 2025 at 3:33pm MDT