

\$590,000 - 2366 Ware Crescent, Edmonton

MLS® #E4452747

\$590,000

4 Bedroom, 3.00 Bathroom, 1,516 sqft

Single Family on 0.00 Acres

Windermere, Edmonton, AB

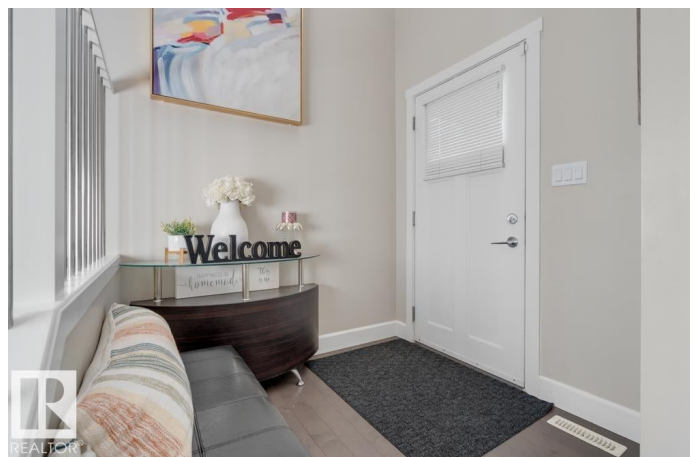
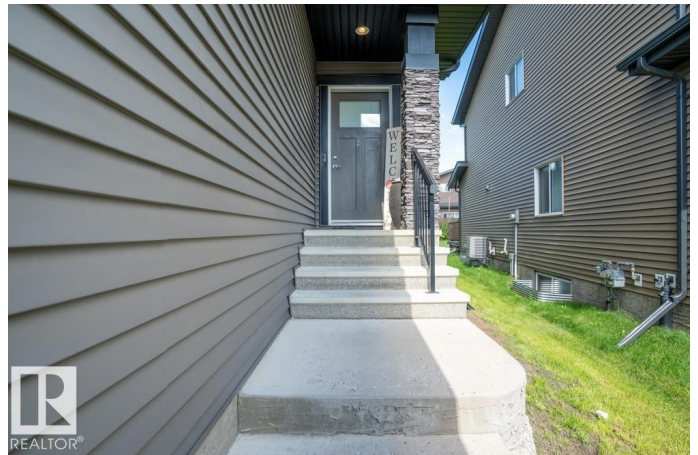
This is a beautiful home in the prestigious community of Windermere, with over 2,200 sq ft of living space. As you step through the front door, you are welcomed into the foyer, featuring gleaming engineered hardwood floors and a spacious entryway. This stunning home offers hardwood floors, a bright kitchen with walk-in pantry and eat-up bar, and a living/dining space overlooking a green backyard. The main floor includes the double attached drywalled garage, laundry, half bath and a versatile den. Upstairs, you'll find a luxurious primary suite with ample space for a king-sized bed, a large walk-in closet, and a private ensuite bathroom. Down the hall are two additional well-proportioned bedrooms and another full bathroom. The fully finished basement offers a spacious family room, a comfortable bedroom with its own walk-in closet and a private bathroom that is perfect for guests. This neighbourhood is walking distance to shopping centres, parks and schools (Constable, St. John XXII, Lillian Osbourne etc.)

Built in 2015

Essential Information

MLS® # E4452747

Price \$590,000



Bedrooms	4
Bathrooms	3.00
Full Baths	3
Square Footage	1,516
Acres	0.00
Year Built	2015
Type	Single Family
Sub-Type	Half Duplex
Style	2 Storey
Status	Active

Community Information

Address	2366 Ware Crescent
Area	Edmonton
Subdivision	Windermere
City	Edmonton
County	ALBERTA
Province	AB
Postal Code	T6W 0S4

Amenities

Amenities	On Street Parking, Closet Organizers, Deck, Detectors Smoke, Security Door
Parking	Double Garage Attached

Interior

Interior Features	ensuite bathroom
Appliances	Air Conditioning-Central, Dishwasher-Built-In, Dryer, Garage Control, Garage Opener, Oven-Microwave, Refrigerator, Stove-Electric, Washer
Heating	Forced Air-2, Natural Gas
Stories	3
Has Basement	Yes
Basement	Full, Finished

Exterior

Exterior	Wood, Stone, Vinyl
Exterior Features	Airport Nearby, Landscaped, Level Land, No Back Lane, Picnic Area, Playground Nearby, Public Swimming Pool, Public Transportation, Recreation Use, Schools, Shopping Nearby, Ski Hill Nearby, Partially Fenced

Roof	Unknown
Construction	Wood, Stone, Vinyl
Foundation	See Remarks

School Information

Elementary	Constable Daniel Woodall
Middle	Riverbend; St. John XXII
High	Lillian Osbourne; Mother M

Additional Information

Date Listed	August 13th, 2025
Days on Market	1
Zoning	Zone 56
HOA Fees	250
HOA Fees Freq.	Annually

DATA IS DEEMED RELIABLE BUT IS NOT GUARANTEED ACCURATE BY THE REALTORS® ASSOCIATION OF EDMONTON. COPYRIGHT 2025 BY THE REALTORS® ASSOCIATION OF EDMONTON. ALL RIGHTS RESERVED.Trademarks are owned or controlled by the Canadian Real Estate Association (CREA) and identify real estate professionals who are members of CREA (REALTOR®, REALTORS®) and/or the quality of services they provide (MLS®, Multiple Listing Service®)

Listing information last updated on August 14th, 2025 at 5:32pm MDT