

## \$419,900 - 1321 South Creek Link, Stony Plain

MLS® #E4452604

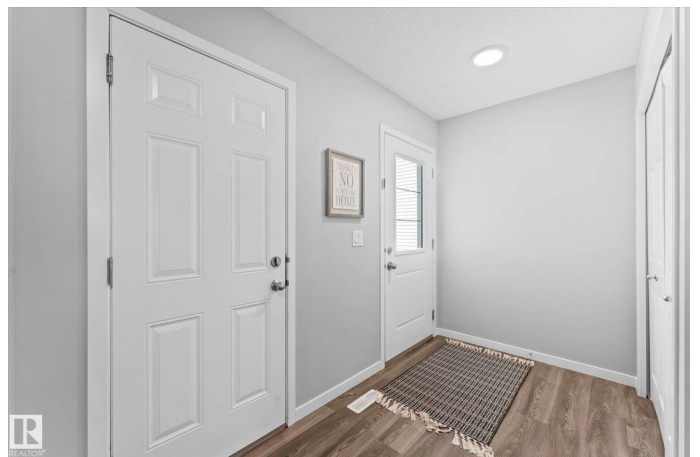
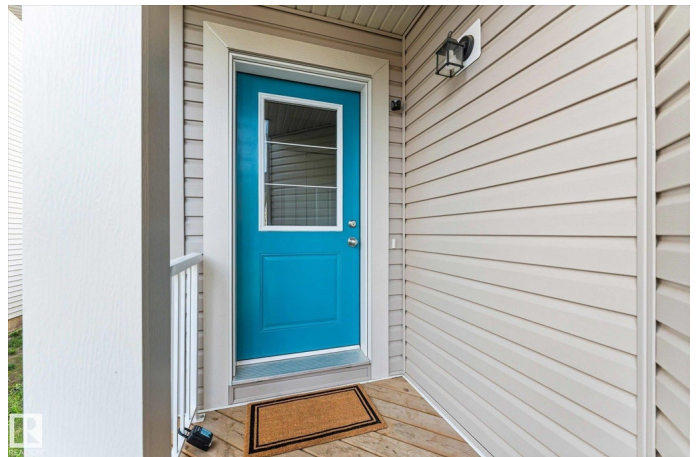
**\$419,900**

3 Bedroom, 2.50 Bathroom, 1,556 sqft

Single Family on 0.00 Acres

South Creek, Stony Plain, AB

Step into style & comfort with this modern 2-storey half duplex, perfectly designed for family living. Located in a SouthCreek just steps from a playground, this home blends modern design with natural, upgraded finishes that create a warm & inviting atmosphere. The open-concept main floor features a bright living space with large windows, sleek flooring, & a beautifully appointed kitchen with contemporary cabinetry, Quartz countertops, & stainless steel appliances. Upstairs, youâ€™ll find spacious bedrooms & Bonus room, including a serene primary suite with a walk-in closet & private ensuite. Upper floor laundry, great back yard & deck, large attached garage, & extra storage. Envision a play space, garden, or outdoor entertaining area or great BBQ family environment. All this in a vibrant golf course community, offering scenic surroundings, great amenities, and quick access to shopping, schools, and commuter routes. If youâ€™re seeking a stylish, move-in-ready home this one will surely check off those boxes!



Built in 2022

### Essential Information

MLS® # E4452604

Price \$419,900

Bedrooms	3
Bathrooms	2.50
Full Baths	2
Half Baths	1
Square Footage	1,556
Acres	0.00
Year Built	2022
Type	Single Family
Sub-Type	Half Duplex
Style	2 Storey
Status	Active

### Community Information

Address	1321 South Creek Link
Area	Stony Plain
Subdivision	South Creek
City	Stony Plain
County	ALBERTA
Province	AB
Postal Code	T7Z 0K6

### Amenities

Amenities	Ceiling 9 ft., Deck, Exterior Walls- 2"x6", Vinyl Windows, See Remarks
Parking Spaces	4
Parking	Double Garage Attached

### Interior

Interior Features	ensuite bathroom
Appliances	Dishwasher-Built-In, Dryer, Garage Opener, Microwave Hood Fan, Refrigerator, Stove-Electric, Washer
Heating	Forced Air-1, Natural Gas
Stories	2
Has Basement	Yes
Basement	Full, Unfinished

### Exterior

Exterior	Wood, Vinyl
Exterior Features	Golf Nearby, No Back Lane, Playground Nearby, Schools, Shopping Nearby, See Remarks

Roof	Asphalt Shingles
Construction	Wood, Vinyl
Foundation	Concrete Perimeter

**Additional Information**

Date Listed	August 12th, 2025
Days on Market	2
Zoning	Zone 91

DATA IS DEEMED RELIABLE BUT IS NOT GUARANTEED ACCURATE BY THE REALTORS® ASSOCIATION OF EDMONTON. COPYRIGHT 2025 BY THE REALTORS® ASSOCIATION OF EDMONTON. ALL RIGHTS RESERVED.Trademarks are owned or controlled by the Canadian Real Estate Association (CREA) and identify real estate professionals who are members of CREA (REALTOR®, REALTORS®) and/or the quality of services they provide (MLS®, Multiple Listing Service®)

Listing information last updated on August 14th, 2025 at 5:32pm MDT