

\$279,900 - 13 3115 119 Street, Edmonton

MLS® #E4451745

\$279,900

4 Bedroom, 2.50 Bathroom, 1,356 sqft
Condo / Townhouse on 0.00 Acres

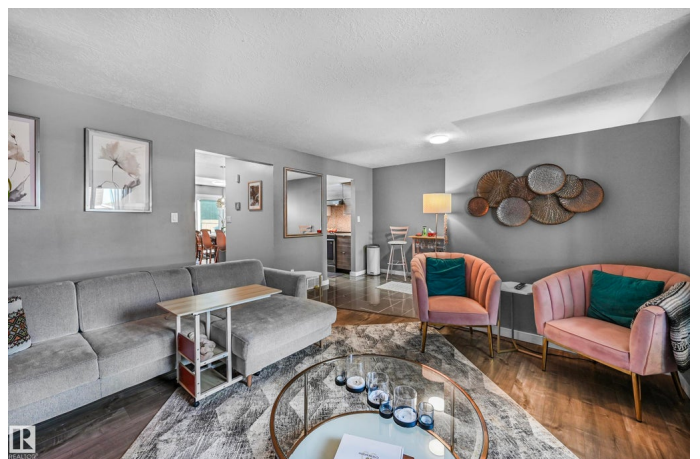
Sweet Grass, Edmonton, AB

Welcome home to this beautifully updated 2-storey townhouse offering the perfect blend of style, space, and serenity. Featuring a modern open-concept floor plan, this home is designed for both comfortable living and elegant entertaining. Step into the heart of the home—a newly renovated gourmet chef’s kitchen complete with high-end appliances, sleek countertops, and ample cabinetry, perfect for preparing meals and hosting guests. The spacious living and dining areas are filled with natural light, creating a warm and inviting atmosphere. Upstairs, you’ll find four generously sized bedrooms, a serene primary suite with a private ensuite and plenty of closet space. 2.1 bathrooms throughout the home, convenience is never compromised. The finished basement offers additional living space ideal for a family room, home office, or gym, whatever suits your lifestyle. Enjoy peaceful views as this property backs directly onto a lush green space, providing privacy and a natural back drop year-round.

Built in 1982

Essential Information

MLS® #	E4451745
Price	\$279,900
Bedrooms	4



Bathrooms	2.50
Full Baths	2
Half Baths	1
Square Footage	1,356
Acres	0.00
Year Built	1982
Type	Condo / Townhouse
Sub-Type	Townhouse
Style	2 Storey
Status	Active

Community Information

Address	13 3115 119 Street
Area	Edmonton
Subdivision	Sweet Grass
City	Edmonton
County	ALBERTA
Province	AB
Postal Code	T6J 5N5

Amenities

Amenities	No Smoking Home, Parking-Extra, Parking-Visitor, Patio, See Remarks
Parking	Stall, See Remarks

Interior

Interior Features	ensuite bathroom
Appliances	Dishwasher-Built-In, Dryer, Hood Fan, Refrigerator, Stove-Electric, Washer, Window Coverings
Heating	Forced Air-1, Natural Gas
Stories	2
Has Basement	Yes
Basement	Full, Finished

Exterior

Exterior	Wood, Stone, Vinyl
Exterior Features	Airport Nearby, Backs Onto Park/Trees, Fenced, Golf Nearby, Low Maintenance Landscape, Playground Nearby, Public Transportation, Shopping Nearby, See Remarks
Roof	Asphalt Shingles

Construction	Wood, Stone, Vinyl
Foundation	Concrete Perimeter

Additional Information

Date Listed	August 7th, 2025
Days on Market	13
Zoning	Zone 16
Condo Fee	\$356

DATA IS DEEMED RELIABLE BUT IS NOT GUARANTEED ACCURATE BY THE REALTORS® ASSOCIATION OF EDMONTON. COPYRIGHT 2025 BY THE REALTORS® ASSOCIATION OF EDMONTON. ALL RIGHTS RESERVED. Trademarks are owned or controlled by the Canadian Real Estate Association (CREA) and identify real estate professionals who are members of CREA (REALTOR®, REALTORS®) and/or the quality of services they provide (MLS®, Multiple Listing Service®)

Listing information last updated on August 20th, 2025 at 7:32pm MDT