

\$185,900 - 292 Lancaster Terrace, Edmonton

MLS® #E4446568

\$185,900

3 Bedroom, 1.50 Bathroom, 1,101 sqft
Condo / Townhouse on 0.00 Acres

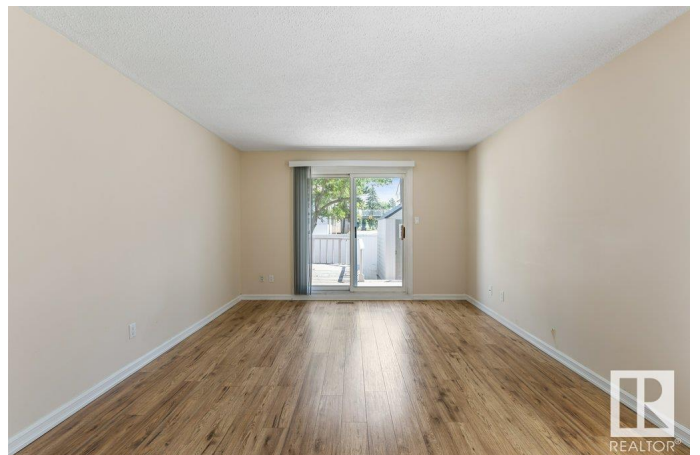
Dunluce, Edmonton, AB

Welcome to this spacious & affordable bungalow-style carriage home, nestled in the heart of the Dunluce community. Perfect for families, this home offers a smart, functional layout & an abundance of natural light throughout. The bright living room features a cozy fireplace, large patio doors that open to a generous, fully fenced backyard—ideal for kids, pets, or entertaining guests. The kitchen is both practical and stylish with ample cabinetry, plenty of counter space, & newer stainless steel appliances. The primary bedroom includes a private 2-piece ensuite, while two additional well-sized bedrooms offer flexibility for a growing family or home office space. A 4-pc bathroom and convenient in-suite laundry area complete the interior. Step outside to enjoy a large deck, raised garden beds perfect for your green thumb, & a durable resin garden shed for extra storage. Ideally located near green spaces, parks, schools, & the YMCA recreation centre, this home offers comfort, value, and community!

Built in 1977

Essential Information

MLS® #	E4446568
Price	\$185,900
Bedrooms	3



Bathrooms	1.50
Full Baths	1
Half Baths	1
Square Footage	1,101
Acres	0.00
Year Built	1977
Type	Condo / Townhouse
Sub-Type	Townhouse
Style	Bungalow
Status	Active

Community Information

Address	292 Lancaster Terrace
Area	Edmonton
Subdivision	Dunluce
City	Edmonton
County	ALBERTA
Province	AB
Postal Code	T5X 5T7

Amenities

Amenities	Deck, Parking-Visitor
Parking	Stall

Interior

Interior Features	ensuite bathroom
Appliances	Dishwasher-Built-In, Dryer, Microwave Hood Fan, Refrigerator, Stove-Electric, Washer, Window Coverings, TV Wall Mount
Heating	Forced Air-1, Natural Gas
Stories	1
Has Basement	Yes
Basement	None, No Basement

Exterior

Exterior	Wood, Stucco, Vinyl
Exterior Features	Fenced, Landscaped, Playground Nearby, Public Transportation, Schools, Shopping Nearby
Roof	Asphalt Shingles
Construction	Wood, Stucco, Vinyl

Foundation Concrete Perimeter

Additional Information

Date Listed July 8th, 2025
Days on Market 49
Zoning Zone 27
Condo Fee \$425

DATA IS DEEMED RELIABLE BUT IS NOT GUARANTEED ACCURATE BY THE REALTORS® ASSOCIATION OF EDMONTON. COPYRIGHT 2025 BY THE REALTORS® ASSOCIATION OF EDMONTON. ALL RIGHTS RESERVED.Trademarks are owned or controlled by the Canadian Real Estate Association (CREA) and identify real estate professionals who are members of CREA (REALTOR®, REALTORS®) and/or the quality of services they provide (MLS®, Multiple Listing Service®)
Listing information last updated on August 26th, 2025 at 10:48am MDT