

Courtesy Of Nadia Glavonjic Of Sterling Real Estate

\$579,900 - 41 Meadowgrove Lane, Spruce Grove

MLS® #E4446036

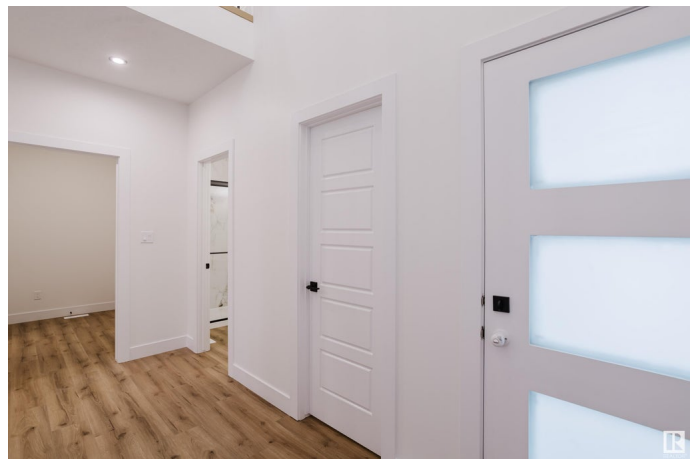
\$579,900

3 Bedroom, 3.00 Bathroom, 2,191 sqft

Single Family on 0.00 Acres

McLaughlin_SPGR, Spruce Grove, AB

Welcome to the stunning Kismet model, ideally located in the desirable community of McLaughlin! This thoughtfully designed home greets you with soaring open-to-above ceilings and an abundance of natural light that creates an airy, welcoming atmosphere. The main floor features a spacious walk-in coat closet, a full bathroom, and a versatile den perfect for a home office or guest room. A beautifully appointed kitchen with a central island flows seamlessly into the open-concept living and dining area, while a separate spice kitchen offers added convenience for everyday cooking or entertaining. Upstairs, you'll find two generously sized bedrooms and a luxurious primary suite complete with a spa-inspired 5-piece ensuite and walk-in closet. The unfinished basement includes a separate side entrance. With elegant finishes, a functional layout, and incredible flexibility, the Kismet model offers the perfect blend of comfort, style, and location.



Built in 2025

Essential Information

MLS® #	E4446036
Price	\$579,900
Bedrooms	3
Bathrooms	3.00

Full Baths	3
Square Footage	2,191
Acres	0.00
Year Built	2025
Type	Single Family
Sub-Type	Detached Single Family
Style	2 Storey
Status	Active

Community Information

Address	41 Meadowgrove Lane
Area	Spruce Grove
Subdivision	McLaughlin_SPGR
City	Spruce Grove
County	ALBERTA
Province	AB
Postal Code	T7X 0W2

Amenities

Amenities	Ceiling 9 ft., Closet Organizers, Exterior Walls- 2"x6", Hot Water Tankless, No Animal Home, No Smoking Home, Vinyl Windows
Parking	Double Garage Attached

Interior

Interior Features	ensuite bathroom
Appliances	Garage Control, Garage Opener, Hood Fan
Heating	Forced Air-1, Natural Gas
Fireplace	Yes
Fireplaces	Remote Control
Stories	2
Has Basement	Yes
Basement	Full, Unfinished

Exterior

Exterior	Wood, Stone, Vinyl
Exterior Features	Playground Nearby, Schools, Shopping Nearby
Roof	Asphalt Shingles
Construction	Wood, Stone, Vinyl
Foundation	Concrete Perimeter

Additional Information

Date Listed July 3rd, 2025

Days on Market 43

Zoning Zone 91

DATA IS DEEMED RELIABLE BUT IS NOT GUARANTEED ACCURATE BY THE REALTORS® ASSOCIATION OF EDMONTON. COPYRIGHT 2025 BY THE REALTORS® ASSOCIATION OF EDMONTON. ALL RIGHTS RESERVED. Trademarks are owned or controlled by the Canadian Real Estate Association (CREA) and identify real estate professionals who are members of CREA (REALTOR®, REALTORS®) and/or the quality of services they provide (MLS®, Multiple Listing Service®)

Listing information last updated on August 15th, 2025 at 8:17am MDT