

\$525,000 - 8130 77 Avenue, Edmonton

MLS® #E4442215

\$525,000

4 Bedroom, 2.00 Bathroom, 1,277 sqft

Single Family on 0.00 Acres

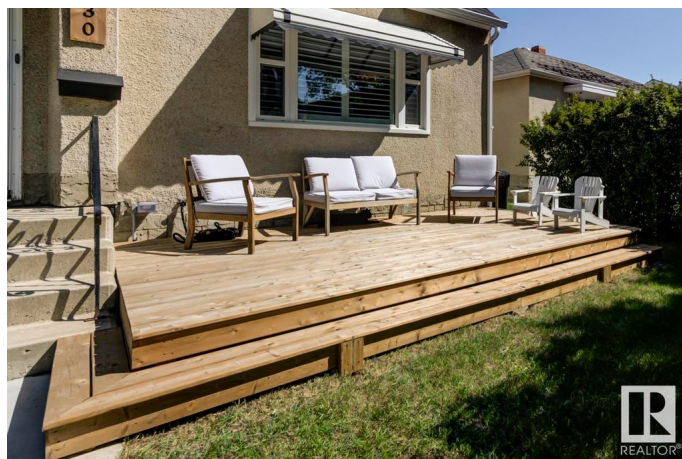
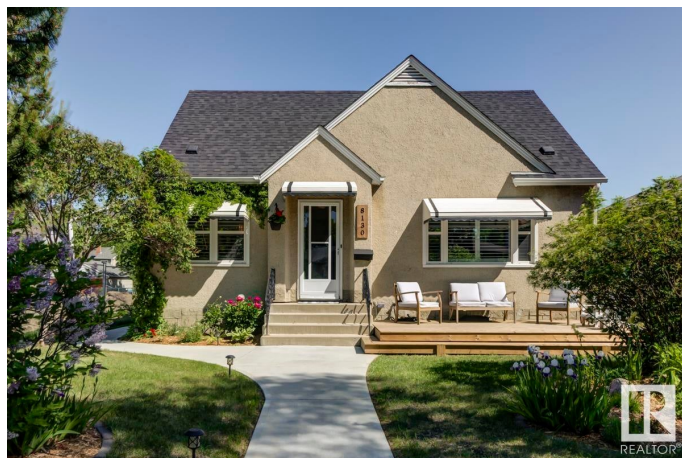
King Edward Park, Edmonton, AB

Welcome to this cute as a button character home in the heart of King Edward Park. This 1.5 storey has so much to offer. Featuring 4 Bedrooms (1 on Main, 2 Up, 1 Dn), 2 Baths and a Fully Finished Basement with Separate Entry and Full Kitchen. This home is very well kept and full of upgrades like Roof, Kitchen(s), Windows, Furnace, Flooring, Electrical, Weeping Tile, Sump Pump & Central A/C. Offering a well Landscaped yard with a HotTub and Beautiful Seating area, a Front Porch and a Single Detached Garage. Great location; 5 min walk to LRT, close to Schools, Shopping, Transit, Whyte Ave, Ritchie Market and Downtown. Ready to Move in and Enjoy!

Built in 1951

Essential Information

MLS® #	E4442215
Price	\$525,000
Bedrooms	4
Bathrooms	2.00
Full Baths	2
Square Footage	1,277
Acres	0.00
Year Built	1951
Type	Single Family
Sub-Type	Detached Single Family



Style	1 and Half Storey
Status	Active

Community Information

Address	8130 77 Avenue
Area	Edmonton
Subdivision	King Edward Park
City	Edmonton
County	ALBERTA
Province	AB
Postal Code	T6C 0L2

Amenities

Amenities	Air Conditioner, Deck, Hot Tub, Patio, Vinyl Windows, Natural Gas Stove Hookup
Parking	Single Garage Detached

Interior

Appliances	Air Conditioning-Central, Dryer, Stove-Electric, Stove-Gas, Washer, Window Coverings, Refrigerators-Two, Dishwasher-Two, Microwave Hood Fan-Two, Hot Tub
Heating	Forced Air-1, Natural Gas
Stories	3
Has Suite	Yes
Has Basement	Yes
Basement	Full, Finished

Exterior

Exterior	Wood, Stucco
Exterior Features	Back Lane, Fenced, Flat Site, Landscaped, Schools
Roof	Asphalt Shingles
Construction	Wood, Stucco
Foundation	Concrete Perimeter

School Information

Elementary	Avonmore
Middle	Kenilworth
High	McNally

Additional Information

Date Listed June 13th, 2025

Days on Market 3

Zoning Zone 17

DATA IS DEEMED RELIABLE BUT IS NOT GUARANTEED ACCURATE BY THE REALTORS® ASSOCIATION OF EDMONTON. COPYRIGHT 2025 BY THE REALTORS® ASSOCIATION OF EDMONTON. ALL RIGHTS RESERVED. Trademarks are owned or controlled by the Canadian Real Estate Association (CREA) and identify real estate professionals who are members of CREA (REALTOR®, REALTORS®) and/or the quality of services they provide (MLS®, Multiple Listing Service®)

Listing information last updated on June 16th, 2025 at 12:47am MDT