

## \$799,900 - 9717 143 Street, Edmonton

MLS® #E4440417

**\$799,900**

4 Bedroom, 3.50 Bathroom, 1,683 sqft

Single Family on 0.00 Acres

Crestwood, Edmonton, AB

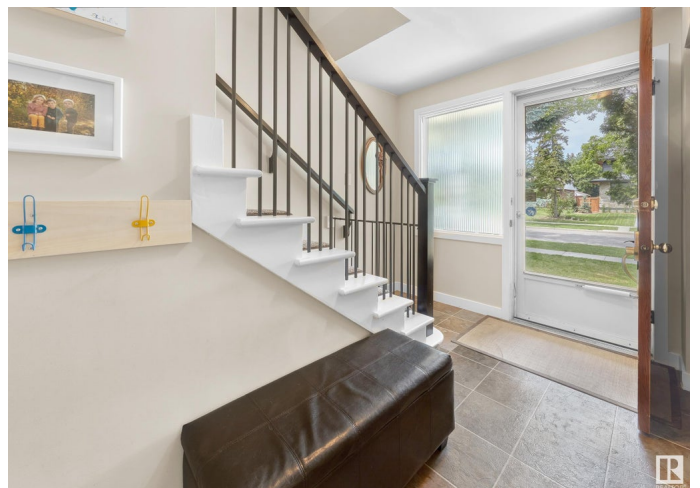
Welcome to Crestwood â€” this unique 2-story home is located on a tree lined street â€” just over 2525sqft including finished basement with a LEGAL 1-bedroom suite & side SEPERATE entrance â€” in total this home has 4 beds, 3.5 baths, AC & double detached garage - all on a 7245sqft lot (est. 50ft x 145ft)! Entering the home, you notice the large windows throughout - allowing for natural light into the living room which is open to the dining area. The renovated open concept kitchen includes a large peninsula island & ample cabinet & counter space. A Â½ bath & laundry complete the main floor. Upstairs â€” the primary suite has a walk-in closet & 3-piece ensuite. Beds #2 & #3 are both a good size & a 4-piece bath completes the 2nd level. Downstairs - the LEGAL suite â€” kitchen, dining area, family room, 1 bed, 4-piece bath, laundry & storage completes the basement. Relax outside in the fenced & landscaped backyard with mature trees. Crestwood is a wonderful neighbourhood with top rated schools, cafes & shopping.

Built in 1954

### Essential Information

MLS® # E4440417

Price \$799,900



Bedrooms	4
Bathrooms	3.50
Full Baths	3
Half Baths	1
Square Footage	1,683
Acres	0.00
Year Built	1954
Type	Single Family
Sub-Type	Detached Single Family
Style	2 Storey
Status	Active

### Community Information

Address	9717 143 Street
Area	Edmonton
Subdivision	Crestwood
City	Edmonton
County	ALBERTA
Province	AB
Postal Code	T5N 2R3

### Amenities

Amenities	Air Conditioner, Deck, Detectors Smoke, No Smoking Home, Walkout Basement
Parking Spaces	4
Parking	Double Garage Detached

### Interior

Interior Features	ensuite bathroom
Appliances	Air Conditioning-Central, Garage Control, Garage Opener, Oven-Built-In, Oven-Microwave, Stove-Countertop Gas, Stove-Electric, Dryer-Two, Refrigerators-Two, Washers-Two
Heating	Forced Air-1, Natural Gas
Stories	3
Has Suite	Yes
Has Basement	Yes
Basement	Full, Finished

### Exterior

Exterior	Wood, Metal, Stucco
Exterior Features	Back Lane, Fenced, Flat Site, Landscaped, Low Maintenance Landscape, Playground Nearby, Public Transportation, Schools, Shopping Nearby, Treed Lot
Roof	Asphalt Shingles
Construction	Wood, Metal, Stucco
Foundation	Concrete Perimeter

### School Information

Elementary	Crestwood School
Middle	Crestwood School
High	Ross Sheppard School

### Additional Information

Date Listed	June 5th, 2025
Days on Market	10
Zoning	Zone 10

DATA IS DEEMED RELIABLE BUT IS NOT GUARANTEED ACCURATE BY THE REALTORS® ASSOCIATION OF EDMONTON. COPYRIGHT 2025 BY THE REALTORS® ASSOCIATION OF EDMONTON. ALL RIGHTS RESERVED. Trademarks are owned or controlled by the Canadian Real Estate Association (CREA) and identify real estate professionals who are members of CREA (REALTOR®, REALTORS®) and/or the quality of services they provide (MLS®, Multiple Listing Service®)

Listing information last updated on June 15th, 2025 at 7:32pm MDT