

Courtesy Of Jeff D Jackson Of Bode

## \$629,900 - 744 Mattson Drive, Edmonton

MLS® #E4437531

**\$629,900**

4 Bedroom, 3.00 Bathroom, 2,014 sqft

Single Family on 0.00 Acres

Mattson, Edmonton, AB

A 1944 sq ft Aurora will WOW you with its luxurious upgrades and a functional layout. It comes with a main floor bedroom and full bathroom upgraded with a walk-in shower. Two-toned central kitchen has everything you need! Smart Black Stainless steel Samsung appliances: built-in microwave, electric stove, French-door fridge, built-in dishwasher and an integrated hood fan. The island comes with waterfall quartz on both sides and a farmer's granite sink! Pantry is conveniently located in the corner and comes with melamine shelving. A spacious living room is at the back of the house; it is big enough to fit any sectional couch. Enjoy the movie nights with a beautiful 60" linear electric fireplace. A gorgeous custom staircase will lead you all the way up to the bonus room. To your right you will find yourself in a primary bedroom that comes with a fully upgraded ensuite with 2 undermount sinks, custom towel shelving and a tiled walk-in shower with built-in niches and rain showerhead.

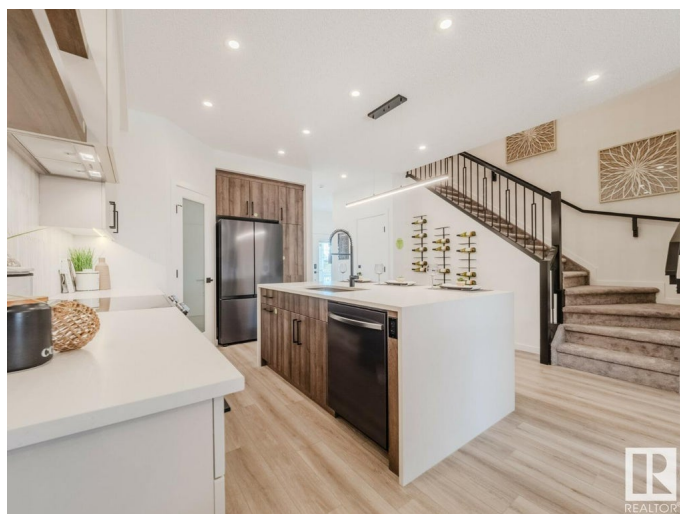
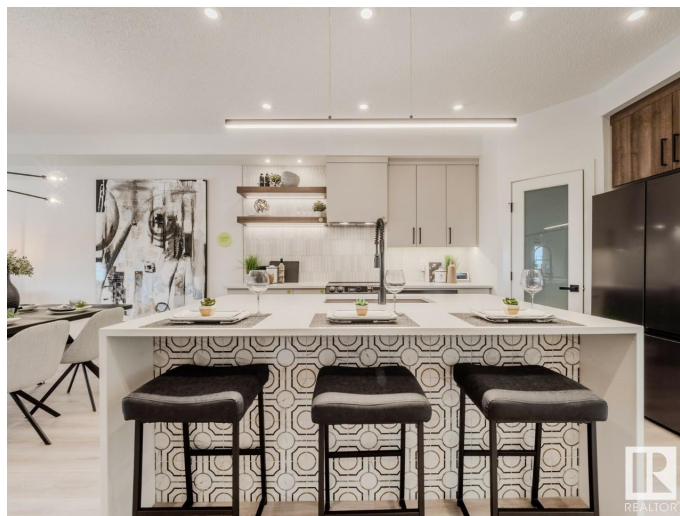
Built in 2024

### Essential Information

MLS® # E4437531

Price \$629,900

Bedrooms 4



Bathrooms	3.00
Full Baths	3
Square Footage	2,014
Acres	0.00
Year Built	2024
Type	Single Family
Sub-Type	Detached Single Family
Style	2 Storey
Status	Active

### Community Information

Address	744 Mattson Drive
Area	Edmonton
Subdivision	Mattson
City	Edmonton
County	ALBERTA
Province	AB
Postal Code	T6X 1A3

### Amenities

Amenities	Closet Organizers, No Animal Home, No Smoking Home
Parking Spaces	2
Parking	Double Garage Detached

### Interior

Interior Features	ensuite bathroom
Appliances	Dishwasher-Built-In, Dryer, Garage Control, Hood Fan, Oven-Microwave, Refrigerator, Stove-Electric, Washer, Window Coverings
Heating	Forced Air-1, Natural Gas
Fireplace	Yes
Fireplaces	Insert
Stories	2
Has Basement	Yes
Basement	Full, Unfinished

### Exterior

Exterior	Wood, Vinyl
Exterior Features	Park/Reserve, Schools, Shopping Nearby

Roof	Asphalt Shingles
Construction	Wood, Vinyl
Foundation	Concrete Perimeter

**Additional Information**

Date Listed	May 21st, 2025
Days on Market	1
Zoning	Zone 53

DATA IS DEEMED RELIABLE BUT IS NOT GUARANTEED ACCURATE BY THE REALTORS® ASSOCIATION OF EDMONTON. COPYRIGHT 2025 BY THE REALTORS® ASSOCIATION OF EDMONTON. ALL RIGHTS RESERVED.Trademarks are owned or controlled by the Canadian Real Estate Association (CREA) and identify real estate professionals who are members of CREA (REALTOR®, REALTORS®) and/or the quality of services they provide (MLS®, Multiple Listing Service®)

Listing information last updated on May 22nd, 2025 at 8:32pm MDT