

## \$1,299,900 - 36 Lafleur Drive, St. Albert

MLS® #E4436911

**\$1,299,900**

7 Bedroom, 3.50 Bathroom, 3,099 sqft

Single Family on 0.00 Acres

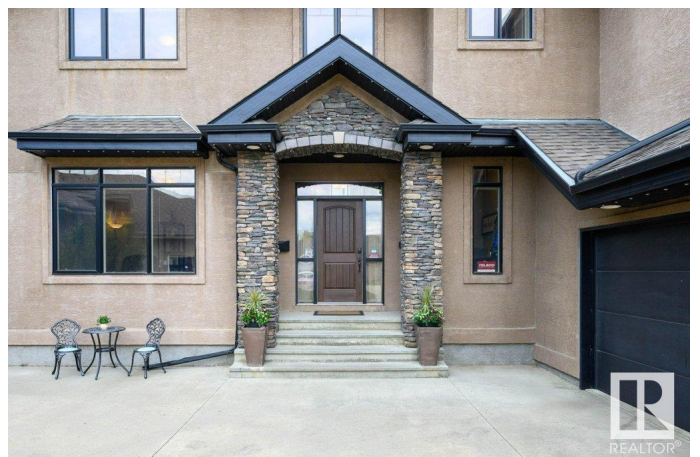
Lacombe Park, St. Albert, AB

Elegant and Functional Executive Family Home! Over 3100 sq ft plus fully dev basement and 3 car garage on large lot on exclusive cul de sac in Lacombe Park Estates. 7 bedrooms plus den in this beautiful home. The carriage drive leads to front door and foyer. Stunning curved staircase and soaring ceilings greet you as you enter. The full height two story stone fireplace highlights the open floor plan. Granite countertops, beautiful hardwood floors, walk thru closet and pantry and abundant sunlight thru the massive windows. Main floor den/office and a second flex rm/bedroom with access to yard complete this level. Upstairs, 4 large bedrooms ,incl. dream primary suite with 5 pce bath and walk-in closet, Convenient full laundry room on this floor. Fully finished basement with two bedrooms, games/entertainment area, and bath -all with infloor htg. SW Backyard oasis with massive 2 level deck, private yard space. Oversized triple garage and large RV friendly driveway. A home to love and to enjoy life in.

Built in 2006

### Essential Information

MLS® #	E4436911
Price	\$1,299,900
Bedrooms	7



Bathrooms	3.50
Full Baths	3
Half Baths	1
Square Footage	3,099
Acres	0.00
Year Built	2006
Type	Single Family
Sub-Type	Detached Single Family
Style	2 Storey
Status	Active

### Community Information

Address	36 Lafleur Drive
Area	St. Albert
Subdivision	Lacombe Park
City	St. Albert
County	ALBERTA
Province	AB
Postal Code	T8N 7N1

### Amenities

Amenities	Bar, Deck, No Smoking Home
Parking Spaces	6
Parking	Triple Garage Attached

### Interior

Interior Features	ensuite bathroom
Appliances	Air Conditioning-Central, Dishwasher-Built-In, Dryer, Freezer, Garage Control, Garage Opener, Oven-Microwave, Washer, Window Coverings, See Remarks, Refrigerators-Two, Stove-Induction
Heating	Forced Air-2, In Floor Heat System, Natural Gas
Fireplace	Yes
Fireplaces	Masonry, Stone Facing
Stories	3
Has Basement	Yes
Basement	Full, Finished

### Exterior

Exterior	Wood, Brick, Stucco
----------	---------------------

Exterior Features	Cul-De-Sac, Fenced, Flat Site, Low Maintenance Landscape, See Remarks
Roof	Asphalt Shingles
Construction	Wood, Brick, Stucco
Foundation	Concrete Perimeter

**Additional Information**

Date Listed	May 16th, 2025
Days on Market	3
Zoning	Zone 24

DATA IS DEEMED RELIABLE BUT IS NOT GUARANTEED ACCURATE BY THE REALTORS® ASSOCIATION OF EDMONTON. COPYRIGHT 2025 BY THE REALTORS® ASSOCIATION OF EDMONTON. ALL RIGHTS RESERVED.Trademarks are owned or controlled by the Canadian Real Estate Association (CREA) and identify real estate professionals who are members of CREA (REALTOR®, REALTORS®) and/or the quality of services they provide (MLS®, Multiple Listing Service®)

Listing information last updated on May 19th, 2025 at 11:47am MDT