

Courtesy Of Ian Choi Of MaxWell Polaris

\$209,900 - 6208 7331 South Terwillegar Drive, Edmonton

MLS® #E4435862

\$209,900

2 Bedroom, 2.00 Bathroom, 833 sqft
Condo / Townhouse on 0.00 Acres

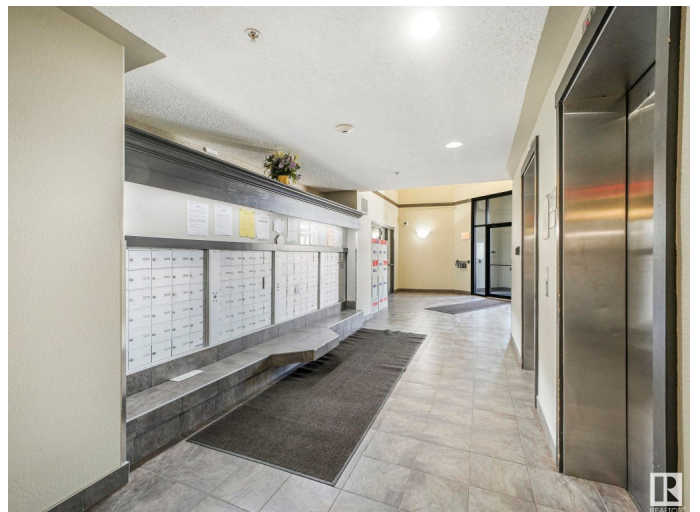
South Terwillegar, Edmonton, AB

Shows a 10! Welcome to this Completely Renovated second-floor condo in Park Place South Terwillegar, featuring a spacious 2-bedroom layout thoughtfully designed for comfort and modern living. Recent renovations include two updated bathrooms, quartz countertops in the kitchen and baths, stainless steel kitchen appliances (refrigerator, electric stove, dishwasher, and microwave), vinyl planks flooring throughout, fresh paint, and stylish new lighting throughout. The open-concept floor plan is bright and airy, complemented by contemporary vinyl flooring and a welcoming living space. Step out onto your private balcony and enjoy open views of the area. Ideally located in a vibrant neighborhood close to schools, shopping, dining, banks, public transit, and Freson Bros fresh market.

Built in 2007

Essential Information

MLS® #	E4435862
Price	\$209,900
Bedrooms	2
Bathrooms	2.00
Full Baths	2



Square Footage	833
Acres	0.00
Year Built	2007
Type	Condo / Townhouse
Sub-Type	Lowrise Apartment
Style	Single Level Apartment
Status	Active

Community Information

Address	6208 7331 South Terwillegar Drive
Area	Edmonton
Subdivision	South Terwillegar
City	Edmonton
County	ALBERTA
Province	AB
Postal Code	T6R 0L9

Amenities

Amenities	Parking-Plug-Ins, Parking-Visitor
Parking	Stall

Interior

Interior Features	ensuite bathroom
Appliances	Dishwasher-Built-In, Microwave Hood Fan, Refrigerator, Stacked Washer/Dryer, Stove-Electric
Heating	Baseboard, Hot Water, Natural Gas
# of Stories	4
Stories	1
Has Basement	Yes
Basement	None, No Basement

Exterior

Exterior	Wood, Vinyl
Exterior Features	Playground Nearby, Public Swimming Pool, Public Transportation, Schools
Roof	Asphalt Shingles
Construction	Wood, Vinyl
Foundation	Concrete Perimeter

Additional Information

Date Listed May 11th, 2025

Days on Market 86

Zoning Zone 14

Condo Fee \$406

DATA IS DEEMED RELIABLE BUT IS NOT GUARANTEED ACCURATE BY THE REALTORS® ASSOCIATION OF EDMONTON. COPYRIGHT 2025 BY THE REALTORS® ASSOCIATION OF EDMONTON. ALL RIGHTS RESERVED. Trademarks are owned or controlled by the Canadian Real Estate Association (CREA) and identify real estate professionals who are members of CREA (REALTOR®, REALTORS®) and/or the quality of services they provide (MLS®, Multiple Listing Service®)

Listing information last updated on August 5th, 2025 at 4:03pm MDT