

\$449,900 - 3 1901 126 Street, Edmonton

MLS® #E4433618

\$449,900

4 Bedroom, 3.50 Bathroom, 1,826 sqft
Condo / Townhouse on 0.00 Acres

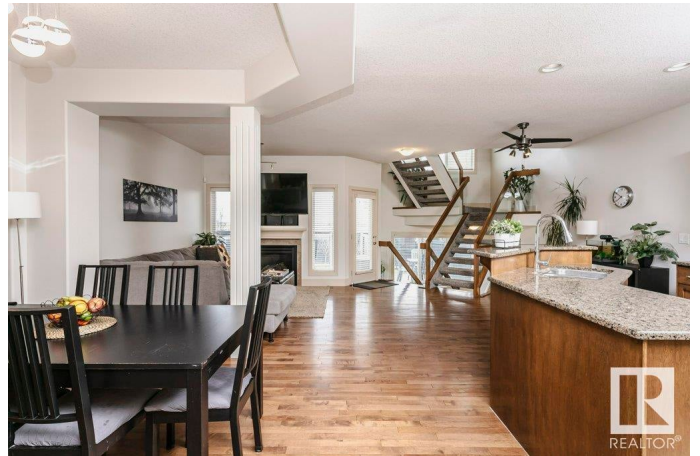
Rutherford (Edmonton), Edmonton, AB

This award-winning Kimberley-built duplex is the perfect family home, ideally located in the heart of Rutherford near scenic walking trails and the pond. The open-concept main floor features 9 ft ceilings, cinnamon maple cabinets, granite countertops, stainless steel appliances, a large island, and a corner pantry. The spacious dining area accommodates a full table and china cabinet, while the living room offers a cozy gas fireplace and patio doors to a two-tiered deck and fenced yard. A classic open-riser staircase leads to a bright second floor with a loft/bonus room, laundry, a generous primary suite with walk-in closet and spa-like 5-piece ensuite, plus two additional bedrooms and a 4-piece bath. The fully finished basement includes a family room with two-way fireplace, 4th bedroom, and another full bath. Upgrades include fresh paint (2025), tankless hot water system (2022), central A/C (2022), and a water filtration system (2022). A beautifully maintained home in a sought-after community.

Built in 2008

Essential Information

MLS® #	E4433618
Price	\$449,900
Bedrooms	4



Bathrooms	3.50
Full Baths	3
Half Baths	1
Square Footage	1,826
Acres	0.00
Year Built	2008
Type	Condo / Townhouse
Sub-Type	Half Duplex
Style	2 Storey
Status	Active

Community Information

Address	3 1901 126 Street
Area	Edmonton
Subdivision	Rutherford (Edmonton)
City	Edmonton
County	ALBERTA
Province	AB
Postal Code	T6W 1X3

Amenities

Amenities	Air Conditioner, Ceiling 9 ft., Closet Organizers, Deck, Hot Water Tankless, Parking-Visitor
Parking Spaces	4
Parking	Double Garage Attached

Interior

Interior Features	ensuite bathroom
Appliances	Air Conditioning-Central, Dishwasher-Built-In, Dryer, Fan-Ceiling, Garage Control, Garage Opener, Microwave Hood Fan, Refrigerator, Stove-Electric, Washer, Window Coverings, TV Wall Mount
Heating	Forced Air-1, Natural Gas
Fireplace	Yes
Fireplaces	Tile Surround
Stories	3
Has Basement	Yes
Basement	Full, Finished

Exterior

Exterior	Wood, Vinyl
Exterior Features	Fenced, Golf Nearby, Landscaped, Low Maintenance Landscape, Playground Nearby, Public Transportation, Schools, Shopping Nearby
Roof	Asphalt Shingles
Construction	Wood, Vinyl
Foundation	Concrete Perimeter

Additional Information

Date Listed	May 1st, 2025
Days on Market	14
Zoning	Zone 55
HOA Fees	50
HOA Fees Freq.	Annually
Condo Fee	\$286

DATA IS DEEMED RELIABLE BUT IS NOT GUARANTEED ACCURATE BY THE REALTORS® ASSOCIATION OF EDMONTON. COPYRIGHT 2025 BY THE REALTORS® ASSOCIATION OF EDMONTON. ALL RIGHTS RESERVED. Trademarks are owned or controlled by the Canadian Real Estate Association (CREA) and identify real estate professionals who are members of CREA (REALTOR®, REALTORS®) and/or the quality of services they provide (MLS®, Multiple Listing Service®)

Listing information last updated on May 15th, 2025 at 2:32am MDT