

# \$458,000 - 236 Rolston Wynd, Leduc

MLS® #E4433595

**\$458,000**

4 Bedroom, 3.00 Bathroom, 1,636 sqft  
Single Family on 0.00 Acres

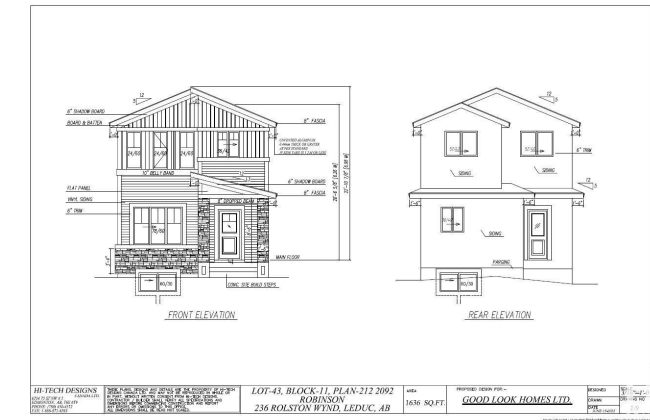
Robinson, Leduc, AB

Welcome to Your dream Home in Robinson, Leduc ,Located just 5 minutes from the international airport and the new airport shopping mall, this stunning new construction offers exceptional value and luxury. This beautiful home features a versatile main floor bedroom and full bathroom, perfect for multi-generational living or a home office. The open layout includes a spacious great room and chefâ€™s kitchen, ideal for entertaining. Upstairs, youâ€™ll find a large family room, two generous bedrooms, two full bathrooms, and a convenient laundry area plus bonus room perfect for growing families. Unfinished basement with side entrance. Great opportunity for job to be customize.

Built in 2024

## Essential Information

MLS® #	E4433595
Price	\$458,000
Bedrooms	4
Bathrooms	3.00
Full Baths	3
Square Footage	1,636
Acres	0.00
Year Built	2024
Type	Single Family



Sub-Type	Detached Single Family
Style	2 Storey
Status	Active

### Community Information

Address	236 Rolston Wynd
Area	Leduc
Subdivision	Robinson
City	Leduc
County	ALBERTA
Province	AB
Postal Code	T9E 1N1

### Amenities

Amenities	No Animal Home, No Smoking Home, See Remarks
Parking	Parking Pad Cement/Paved

### Interior

Interior Features	ensuite bathroom
Appliances	See Remarks
Heating	Forced Air-1, Natural Gas
Fireplace	Yes
Fireplaces	Glass Door
Stories	2
Has Basement	Yes
Basement	Full, Unfinished

### Exterior

Exterior	Wood, Vinyl
Exterior Features	Airport Nearby, Playground Nearby, Shopping Nearby
Roof	Asphalt Shingles
Construction	Wood, Vinyl
Foundation	Concrete Perimeter

### Additional Information

Date Listed	May 1st, 2025
Days on Market	47
Zoning	Zone 81

DATA IS DEEMED RELIABLE BUT IS NOT GUARANTEED ACCURATE BY THE REALTORS® ASSOCIATION OF

EDMONTON. COPYRIGHT 2025 BY THE REALTORS® ASSOCIATION OF EDMONTON. ALL RIGHTS RESERVED.Trademarks are owned or controlled by the Canadian Real Estate Association (CREA) and identify real estate professionals who are members of CREA (REALTOR®, REALTORS®) and/or the quality of services they provide (MLS®, Multiple Listing Service®)

Listing information last updated on June 17th, 2025 at 6:32am MDT