

\$129,900 - 302 1620 48 St, Edmonton

MLS® #E4432628

\$129,900

2 Bedroom, 1.00 Bathroom, 878 sqft

Condo / Townhouse on 0.00 Acres

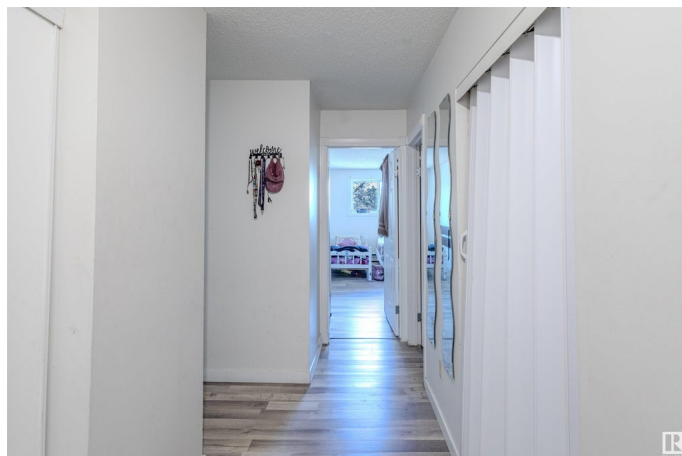
Pollard Meadows, Edmonton, AB

Welcome to Mill woods Terrace! Located in the family friendly community of Pollard Meadows this 3rd floor condo unit of a LOW-RISE CONDO CONVERSION boasts 958+ Sq ft. of living space offering privacy & tranquility. As you step inside, you're greeted by a spacious hallway & bright & inviting living space that seamlessly blends modern design & comfort, featuring large windows allowing natural light in & offering panoramic views of the complex. Adjacent to the dining area is the spacious kitchen w/ ample cabinet space & breakfast bar! This amazing unit also features 2 spacious bedrooms, a hallway storage closet & FULL SIZE BALCONY! Amenities in the building include ON-SITE MANAGEMENT, ELEVATOR & LARGE, CLEAN LAUNDRY FACILITIES ON EACH FLOOR! Close to schools, shopping, restaurants & directly on the ETS bus route! Perfect for first-time investors & first-time home buyer!

Built in 1981

Essential Information

| | |
|------------|-----------|
| MLS® # | E4432628 |
| Price | \$129,900 |
| Bedrooms | 2 |
| Bathrooms | 1.00 |
| Full Baths | 1 |



| | |
|----------------|------------------------|
| Square Footage | 878 |
| Acres | 0.00 |
| Year Built | 1981 |
| Type | Condo / Townhouse |
| Sub-Type | Lowrise Apartment |
| Style | Single Level Apartment |
| Status | Active |

Community Information

| | |
|-------------|-----------------|
| Address | 302 1620 48 St |
| Area | Edmonton |
| Subdivision | Pollard Meadows |
| City | Edmonton |
| County | ALBERTA |
| Province | AB |
| Postal Code | T6L 5P1 |

Amenities

| | |
|-----------|--|
| Amenities | No Animal Home, No Smoking Home, See Remarks |
| Parking | Stall |

Interior

| | |
|--------------|--|
| Appliances | Dishwasher - Energy Star, Refrigerator, Stove-Electric |
| Heating | Baseboard, Natural Gas |
| # of Stories | 4 |
| Stories | 1 |
| Has Basement | Yes |
| Basement | None, No Basement |

Exterior

| | |
|-------------------|---|
| Exterior | Wood |
| Exterior Features | Paved Lane, Public Transportation, Schools, Shopping Nearby |
| Roof | Asphalt Shingles |
| Construction | Wood |
| Foundation | Concrete Perimeter |

Additional Information

| | |
|----------------|------------------|
| Date Listed | April 24th, 2025 |
| Days on Market | 53 |

| | |
|-----------|---------|
| Zoning | Zone 29 |
| Condo Fee | \$504 |

DATA IS DEEMED RELIABLE BUT IS NOT GUARANTEED ACCURATE BY THE REALTORS® ASSOCIATION OF EDMONTON. COPYRIGHT 2025 BY THE REALTORS® ASSOCIATION OF EDMONTON. ALL RIGHTS RESERVED. Trademarks are owned or controlled by the Canadian Real Estate Association (CREA) and identify real estate professionals who are members of CREA (REALTOR®, REALTORS®) and/or the quality of services they provide (MLS®, Multiple Listing Service®)

Listing information last updated on June 16th, 2025 at 10:32am MDT