

\$358,800 - 25 12104 16 Avenue, Edmonton

MLS® #E4432314

\$358,800

3 Bedroom, 2.50 Bathroom, 1,180 sqft
Condo / Townhouse on 0.00 Acres

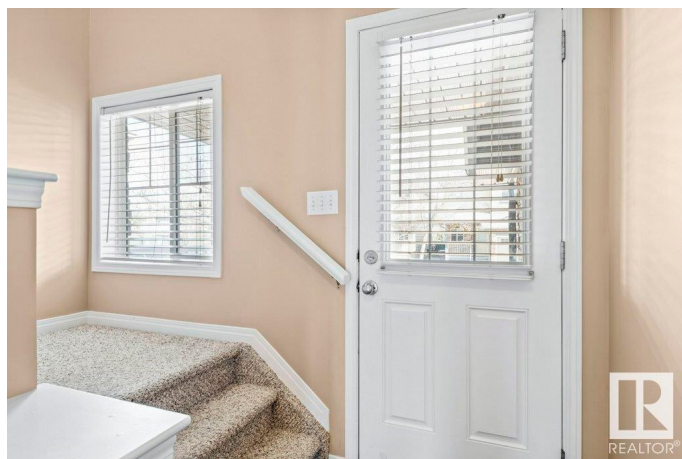
Rutherford (Edmonton), Edmonton, AB

This is it! Your boxes can all be checked off with this one, including price! Perfect no-thru road to the Complex, Perfect Popular neighborhood, Perfect 3-bedroom, 2.5 bathroom layout, Perfect fresh paint for everything throughout, Perfect double-sized driveway, accommodating parking of 2 vehicles + the garage, Perfect walking distance to schools, parks and endless amenities. Well... let's just say "Perfect" sums it up... You can relax and enjoy the gas fireplace while watching the kids or pets in the backyard at the same time! Visitor parking is just a few steps away from your New Home, within this quiet, tucked-away hidden gem of a complex. Shingles were new in 2022 and the entire home has just been professionally cleaned and painted! Bonus of a beautiful wardrobe closet in the 2nd bdrm. Ready to move in. Great access to surrounding main commute arteries. Be the first to come check it out 10/10!

Built in 2005

Essential Information

MLS® #	E4432314
Price	\$358,800
Bedrooms	3
Bathrooms	2.50



Full Baths	2
Half Baths	1
Square Footage	1,180
Acres	0.00
Year Built	2005
Type	Condo / Townhouse
Sub-Type	Half Duplex
Style	2 Storey
Status	Active

Community Information

Address	25 12104 16 Avenue
Area	Edmonton
Subdivision	Rutherford (Edmonton)
City	Edmonton
County	ALBERTA
Province	AB
Postal Code	T6W 1X3

Amenities

Amenities	Detectors Smoke, Hot Water Natural Gas, Parking-Visitor, Vacuum System-Roughed-In
Parking Spaces	3
Parking	Front Drive Access, Single Garage Attached, See Remarks

Interior

Appliances	Dishwasher-Built-In, Dryer, Microwave Hood Fan, Refrigerator, Storage Shed, Stove-Electric, Washer, Window Coverings
Heating	Forced Air-1, Natural Gas
Fireplace	Yes
Fireplaces	Stone Facing
Stories	3
Has Basement	Yes
Basement	Full, Finished

Exterior

Exterior	Wood, Stone, Vinyl
Exterior Features	Airport Nearby, Fenced, Golf Nearby, Landscaped, No Back Lane, Playground Nearby, Public Transportation, Schools, Shopping Nearby

Roof	Asphalt Shingles
Construction	Wood, Stone, Vinyl
Foundation	Concrete Perimeter

Additional Information

Date Listed	April 23rd, 2025
Days on Market	22
Zoning	Zone 55
HOA Fees	75
HOA Fees Freq.	Annually
Condo Fee	\$168

DATA IS DEEMED RELIABLE BUT IS NOT GUARANTEED ACCURATE BY THE REALTORS® ASSOCIATION OF EDMONTON. COPYRIGHT 2025 BY THE REALTORS® ASSOCIATION OF EDMONTON. ALL RIGHTS RESERVED.Trademarks are owned or controlled by the Canadian Real Estate Association (CREA) and identify real estate professionals who are members of CREA (REALTOR®, REALTORS®) and/or the quality of services they provide (MLS®, Multiple Listing Service®)

Listing information last updated on May 15th, 2025 at 6:17am MDT