

Courtesy Of Heather McLellan Of Exp Realty

\$199,900 - 402 Graybriar Green, Stony Plain

MLS® #E4431415

\$199,900

2 Bedroom, 1.00 Bathroom, 537 sqft
Condo / Townhouse on 0.00 Acres

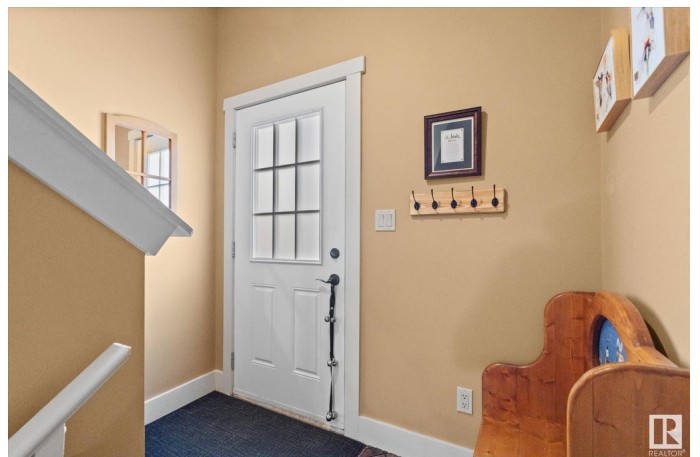
Graybriar, Stony Plain, AB

Welcome to this charming 2-bedroom bi-level condo, located on the quiet, west side of the complex. Youâ€™ll love the mountain chalet feel! Inside, you'll find a bright and open layout! The open living room, dining area, and kitchen island, the perfect space for both relaxation and entertaining. Garden doors open to a private balcony, perfect for enjoying the fresh air. Ample storage options throughout the unit ensure that all your belongings have a place. This unit is equipped with two assigned parking stalls with plug-ins. Close to the highway, this condo provides easy access for commuting, as well as a golf course right beside you and various amenities right around the corner! Experience the Graybriar GreenÂ lifestyle!

Built in 2010

Essential Information

MLS® #	E4431415
Price	\$199,900
Bedrooms	2
Bathrooms	1.00
Full Baths	1
Square Footage	537
Acres	0.00
Year Built	2010



Type	Condo / Townhouse
Sub-Type	Townhouse
Style	Bi-Level
Status	Active

Community Information

Address	402 Graybriar Green
Area	Stony Plain
Subdivision	Graybriar
City	Stony Plain
County	ALBERTA
Province	AB
Postal Code	T7Z 0G1

Amenities

Amenities	Ceiling 9 ft., Storage-In-Suite, Vinyl Windows
Parking Spaces	2
Parking	2 Outdoor Stalls

Interior

Appliances	Dishwasher-Built-In, Dryer, Fan-Ceiling, Microwave Hood Fan, Refrigerator, Stove-Electric, Washer, Window Coverings, Curtains and Blinds
Heating	Forced Air-1, Natural Gas
Stories	2
Has Basement	Yes
Basement	Full, Finished

Exterior

Exterior	Wood, Vinyl
Exterior Features	Corner Lot, Cul-De-Sac, Golf Nearby, Paved Lane, Playground Nearby, Private Setting
Roof	Asphalt Shingles
Construction	Wood, Vinyl
Foundation	Concrete Perimeter

Additional Information

Date Listed	April 17th, 2025
Days on Market	14
Zoning	Zone 91

Condo Fee \$448

DATA IS DEEMED RELIABLE BUT IS NOT GUARANTEED ACCURATE BY THE REALTORS® ASSOCIATION OF EDMONTON. COPYRIGHT 2025 BY THE REALTORS® ASSOCIATION OF EDMONTON. ALL RIGHTS RESERVED. Trademarks are owned or controlled by the Canadian Real Estate Association (CREA) and identify real estate professionals who are members of CREA (REALTOR®, REALTORS®) and/or the quality of services they provide (MLS®, Multiple Listing Service®)

Listing information last updated on May 1st, 2025 at 8:47am MDT