

\$225,000 - 2103 7343 South Terwillegar Drive, Edmonton

MLS® #E4430359

\$225,000

2 Bedroom, 2.00 Bathroom, 901 sqft
Condo / Townhouse on 0.00 Acres

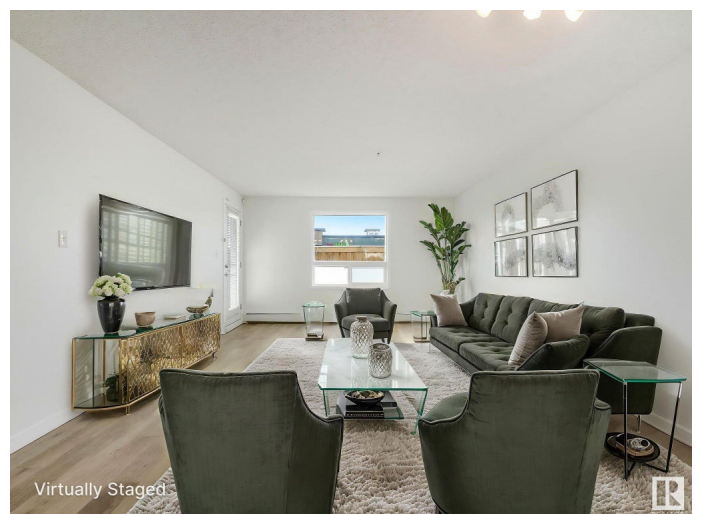
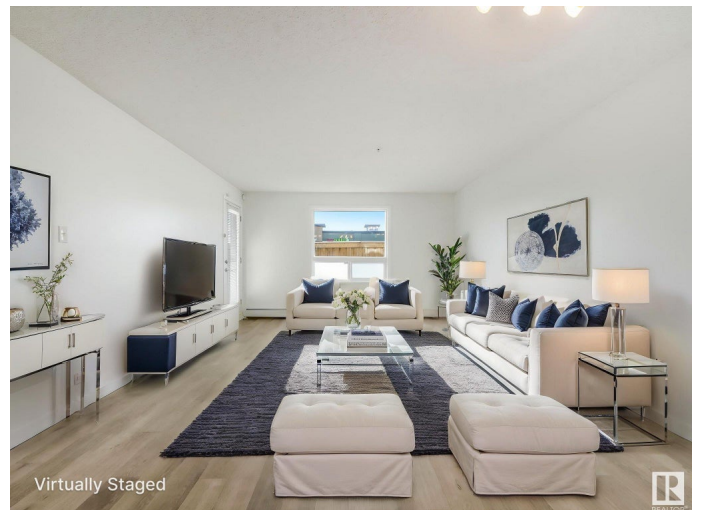
South Terwillegar, Edmonton, AB

Affordable & Stylish Condo in South Terwillegar! This spacious 2 bedroom, 2 bathroom main floor condo offers just under 1,000 sq ft of modern, low-maintenance livingâ€”perfect for first-time home buyers or savvy investors. You'll love the bright, open-concept layout featuring granite countertops, stainless steel appliances, and a large islandâ€”ideal for both everyday living and entertaining. The unit is completely carpet-free, making it easy to maintain and great for allergy-friendly living. Step outside to your private balcony, and enjoy the convenience of in-suite laundry and underground parking. Set in a pet-friendly, well-managed building with plenty of visitor parking, this condo is all about comfort and convenience. Located just minutes from Anthony Henday, South Terwillegar Park, top-rated schools, shopping, grocery stores, and the Currents of Windermere with its movie theatre, restaurants, and more. Move-in ready and packed with value!

Built in 2011

Essential Information

MLS® #	E4430359
Price	\$225,000



Bedrooms	2
Bathrooms	2.00
Full Baths	2
Square Footage	901
Acres	0.00
Year Built	2011
Type	Condo / Townhouse
Sub-Type	Lowrise Apartment
Style	Single Level Apartment
Status	Active

Community Information

Address	2103 7343 South Terwillegar Drive
Area	Edmonton
Subdivision	South Terwillegar
City	Edmonton
County	ALBERTA
Province	AB
Postal Code	T6R 0M2

Amenities

Amenities	Detectors Smoke, Parking-Visitor, Patio, Secured Parking
Parking	Heated, Underground

Interior

Interior Features	ensuite bathroom
Appliances	Dishwasher-Built-In, Dryer, Hood Fan, Refrigerator, Stove-Electric, Washer, Window Coverings
Heating	Hot Water, Natural Gas
# of Stories	4
Stories	1
Has Basement	Yes
Basement	None, No Basement

Exterior

Exterior	Wood, Stone, Vinyl
Exterior Features	Playground Nearby, Public Swimming Pool, Public Transportation, Schools, Shopping Nearby, See Remarks
Roof	Asphalt Shingles

Construction	Wood, Stone, Vinyl
Foundation	Slab

Additional Information

Date Listed	April 11th, 2025
Days on Market	21
Zoning	Zone 14
Condo Fee	\$487

DATA IS DEEMED RELIABLE BUT IS NOT GUARANTEED ACCURATE BY THE REALTORS® ASSOCIATION OF EDMONTON. COPYRIGHT 2025 BY THE REALTORS® ASSOCIATION OF EDMONTON. ALL RIGHTS RESERVED.Trademarks are owned or controlled by the Canadian Real Estate Association (CREA) and identify real estate professionals who are members of CREA (REALTOR®, REALTORS®) and/or the quality of services they provide (MLS®, Multiple Listing Service®)

Listing information last updated on May 2nd, 2025 at 6:32am MDT