

Courtesy Of Jeff Jackson and Madeline Sarafinchan Of Bode

\$699,900 - 11977 35 Avenue Sw, Edmonton

MLS® #E4367814

\$699,900

3 Bedroom, 3.00 Bathroom, 1,557 sqft
Single Family on 0.00 Acres

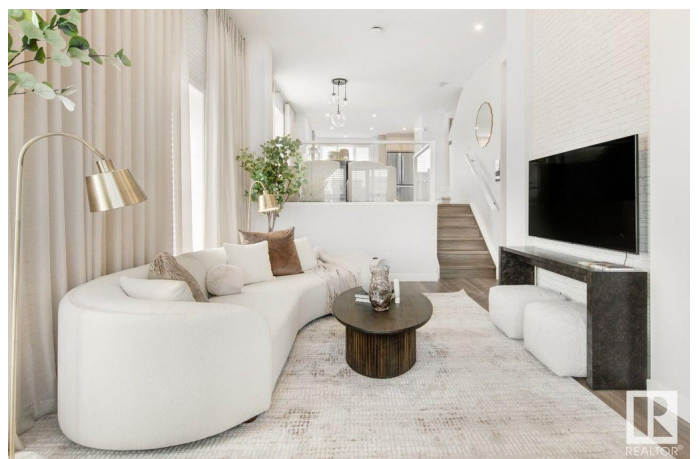
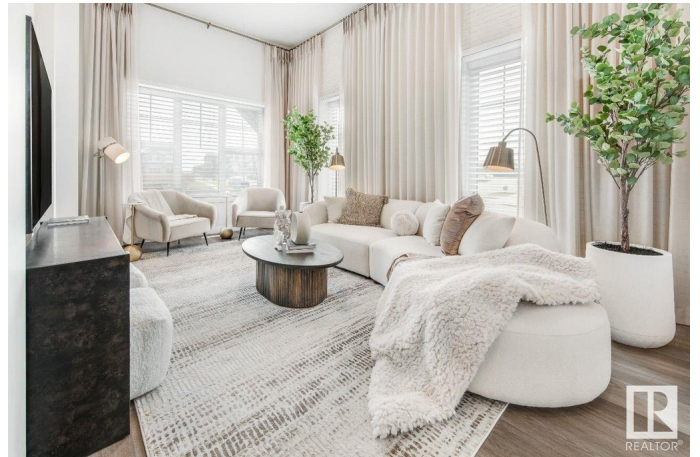
Desrochers Area, Edmonton, AB

Welcome to the exquisite world of The Sonata 18, a masterpiece by Jayman BUILT. Discover a home that beautifully harmonizes comfort, style, and functionality. Step inside and be enchanted by the meticulously crafted open concept main floor. A seamless fusion of modern design and thoughtful layout awaits including SMART technology, Solar Panels and UV Air Purifier. The kitchen stands as a testament to culinary excellence, with stainless steel appliances that promise both form and function. The allure of quartz countertops gracefully extends throughout the home, reflecting elegance in every corner. Indulge in the sanctuary of the master bedroom. An ensuite bathroom becomes a private oasis, inviting you to unwind and rejuvenate. The generously sized walk-in closet ensures ample space for your wardrobe essentials, adding an element of convenience to your daily routine!

Built in 2023

Essential Information

MLS® #	E4367814
Price	\$699,900
Bedrooms	3
Bathrooms	3.00
Full Baths	3
Square Footage	1,557



Acres	0.00
Year Built	2023
Type	Single Family
Sub-Type	Residential Detached Single Family
Style	2 Storey

Community Information

Address	11977 35 Avenue Sw
Area	Edmonton
Subdivision	Desrochers Area
City	Edmonton
County	ALBERTA
Province	AB
Postal Code	T6W 3L9

Amenities

Amenities	Ceiling 9 ft., No Animal Home, No Smoking Home
Features	Ceiling 9 ft., No Animal Home, No Smoking Home
Parking Spaces	2
Parking	Double Garage Detached
# of Garages	2

Interior

Interior	Carpet, Laminate Flooring, Non-Ceramic Tile
Interior Features	Oven-Microwave, Refrigerator, Stove-Electric, Dishwasher-Built-In
Heating	Forced Air-1
# of Stories	2
Has Basement	Yes
Basement	Unfinished, Full

Exterior

Exterior	Stone, Vinyl
Exterior Features	Back Lane, Park/Reserve, Playground Nearby, Schools, Shopping Nearby
Construction	Wood Frame

Additional Information

Date Listed	December 14th, 2023
-------------	---------------------

DATA IS DEEMED RELIABLE BUT IS NOT GUARANTEED ACCURATE BY THE REALTORS® ASSOCIATION OF

EDMONTON. COPYRIGHT 2024 BY THE REALTORS® ASSOCIATION OF EDMONTON. ALL RIGHTS RESERVED. Trademarks are owned or controlled by the Canadian Real Estate Association (CREA) and identify real estate professionals who are members of CREA (REALTOR®, REALTORS®) and/or the quality of services they provide (MLS®, Multiple Listing Service®)

Listing information last updated on October 31st, 2024 at 5:46pm MDT